

# Governor's State Workforce Investment Board



Issue 3 January 2004

★1327 Lockey ★PO Box 1728 ★Helena MT 59624 ★Ph: 406-444-1620 ★Fax: 406-444-1394

## Inside this Issue:

- **NGA Policy Academy Update**
- **Economic Literacy**
- **Desiree Taggart Award**



You will find a direct link to our newsletters on the official State Workforce Investment Board (SWIB) website:  
[www.discoveringmontana.com/gov2/css/boards/workforce/](http://www.discoveringmontana.com/gov2/css/boards/workforce/)

## Upcoming Events:

### Jan. 15

CEP LWIB Meeting  
Anaconda

### Jan. 29

BOS LWIB Meeting  
Billings

### Jan. 27-Feb 10

Street Smart Economics  
(see article on page 2)

**The MARCH SWIB MEETING (March 11-12) has been canceled. Staff will notify you of dates for committee meetings as they are scheduled.**

## New Study Links Career Information with long-term Worker Success

Pam Watson

Making career choices has never been easy, but now more than ever, students and workers benefit from making *Informed and Considered Career Decisions*.

As a result of reauthorization of the Carl Perkins Act in 1998, The Department of Education implemented America's Career Resource Network Association (ACRNA), a non-profit organization dedicated to promoting, supporting, and improving career information and services. Recently, ACRNA published a report The Educational, Social, and Economic Value of *Informed and Considered Career Decisions*.

Key highlights from the report include:

- ❖ More than five times as many people enter careers by chance than by choice.
- ❖ Matching students and workers with occupations that draw on skills and interests results in improved utilization of education and training resources, and higher levels of worker satisfaction.
- ❖ Increased job satisfaction (resulting from informed career decisions) decreases incidence of work-related stress and depression, which is estimated to cost employers \$44 billion annually in lost productive time.
- ❖ Informed and considered career decisions are linked to improved educational achievement, attainment, and efficiency; and students who make informed career decisions are more likely to graduate from high school and to succeed in postsecondary education.
- ❖ People who make informed and considered career decisions make committed and engaged workers, have greater ownership of their work roles, take initiative, and invest in their ongoing professional development.

The complete report is available in the Resource section of the State Workforce Investment Board (SWIB) website at [www.state.mt.us/gov2/css/boards/workforce/](http://www.state.mt.us/gov2/css/boards/workforce/). ■

## Workforce Investment Board Members

**Haley Beaudry, Chair**

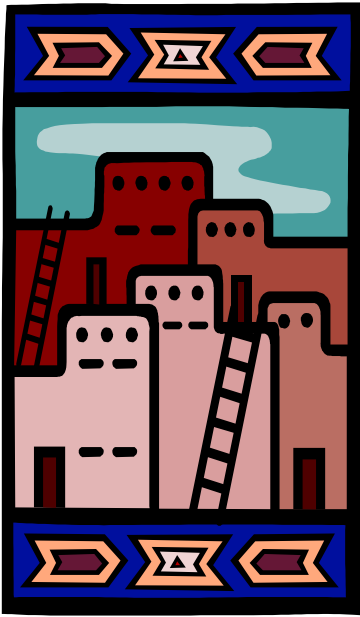
**Ellen Engstedt, Vice Chair**

**Bob Bartholomew**  
**Arlene Becker**  
**Leroy Bingham**  
**Cristina Boyle**  
**Carol Brooker**  
**Caroline Brown**  
**Dick Brown**  
**Webb Brown**  
**Susan Christofferson**  
**Sen. Vicki Cocchiarella**  
**Jim Davison**  
**Bruce Day**  
**Jerry Driscoll**  
**David Gibson**  
**Gail Gray**  
**Lew Grill**  
**Diane Harkins**  
**Cary Hegreberg**  
**Jim Hollenback**  
**Wendy Keating**  
**Susan Knedler**  
**Joe Mathews**  
**Jodi Messinger**  
**Jon Oldenburg**  
**Chuck Olson**  
**Arlene Parisot**  
**Gary Perry**  
**Lyle Phillips**  
**James Reno**  
**Byron Roberts**  
**Diane Ruff**  
**Jeff Rupp**  
**Sheila Stearns**  
**Donald Steinbeisser**  
**Gary Willis**  
**Linda Woods**

### Staff:

**Kelly Chapman,**  
Director

**Pam Watson, Program Specialist**



### **NGA Policy Academy and Chairs & Staff Meeting, Santa Fe, NM**

Pam Watson

Do skills matter? What and whose skills matter? Those were the questions addressed at the NGA Policy Academy meeting in Santa Fe, New Mexico, December 3-5, 2003.

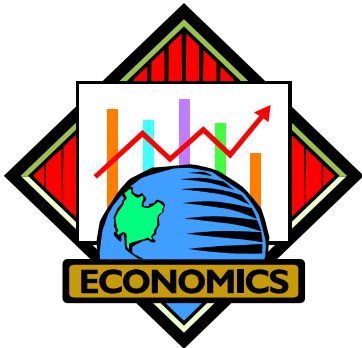
The NGA policy forum sessions covered many topics, including:

- What sectors of the economy and which occupations within them are at risk for exportation? How can post secondary education respond?
- Synchronizing workforce development, economic development, and post-secondary education.
- The anticipation of skills shortages based on baby boomer retirement predictions.
- Business models of employing human capital and the implications for our labor force.
- Advancing low-wage workers: How and where can states find the funding needed for lifelong learning?

The focus of the Chairs and Staff meeting held December 5-6 was largely devoted to strategic planning for the next year. There was discussion concerning roles for the association, and also for State Boards in general. As an association, they will be focusing on their roles as conveners of different groups with interests in workforce development, such as the National Association of Manufacturers and several others. ■

### **Street Smart Economics Workshops**

Pam Watson



The 29<sup>th</sup> Annual Montana Economic Outlook Seminar will be presented in several cities throughout Montana during January, February and March. The seminar will discuss economic education and the important role Montana businesses play in bringing focus to the mission of economic literacy. Speakers will highlight the latest economic trends and what they mean for Montana, and experts from the University of Montana Bureau of Economic Research, Montana State University, and the Institute for Tourism and Recreation Research will examine recent trends and the outlook for Montana in the following industries: wood products, manufacturing, agriculture, health care, and travel and tourism.

#### **Dates & Locations:**

Helena – Jan. 27	Bozeman – Feb. 4
Great Falls – Jan. 28	Butte – Feb. 5
Missoula – Jan. 30	Kalispell – Feb. 10
Billings – Feb. 3	

#### **To learn more, visit:**

[www.bber.umt.edu](http://www.bber.umt.edu)

### **The Governor's Desiree Taggart Memorial Award**

Pam Watson

The Governor's Desiree Taggart Memorial Awards for Workforce Development are given to publicly acknowledge outstanding efforts of individuals, businesses and organizations that have improved workforce development in Montana through the use of quality principles as promoted by the State Workforce Investment Board (SWIB) and the Montana Council for Workforce Quality.

#### **Nominations are due by April 15.**

To submit a nomination in one of the three categories (Outstanding Business of the Year, Quality Program, or Workforce Development Achievement), or to learn more about this award, please review The Governor's Desiree Taggart Memorial Award in the Resource section of the SWIB website at [www.state.mt.us/gov2/css/boards/workforce/](http://www.state.mt.us/gov2/css/boards/workforce/). ■